

S E B A S T I A N W I N T E R

STRING QUARTET NO.2

VIOLA

String Quartet No.2

SEBASTIAN WINTER

$\text{♩} = \text{c. } 90$

II
flautando

III

pp lontano > *pp* lontano >

6

ord.

flautando

ord.

pp < *mp* > *pp* *espress.* *pp* < *p* *pp* sub. < *mp* > *p* <

11

m.s.t.
slow bends, continue ad lib.

f 3 *ppp* poss. < *mf* > m.s.p.

14

5

m.s.t.

p *espress.*

23

ord.

m.s.t.

m.s.p.

f 3 *ppp* < *p* *espress.* < *pp* < *mp* > *pp*

27 *con sord.*
(m.s.p.) *continue ad lib.*

pp lontano

♩ = c. 120
ord.

31 *pizz.*
sfz

38 *arco*
p *sfz* *pizz.* *sfz* *arco* *f*

41

44 *pizz.* *arco*
pp *p* *p*

47 *p*

50 *mf*

52 *p* *mf*

Vc.

55 *f* *ff*

58 *mf* *ff* *mf* *f*

60 *mf* *f* *ff*

62 *f* *f*

65

67 *rit.*.....♩ = c. 90 *p* *pp*

70 *con sord.*
m.s.t. *port.* *ppp poss.* *p molto espress.* *port.* *ppp poss.*

76

2

ord.

3

p *mp* *p* *mf* *p* *mf*

molto espress.

83

3 **3**

p *mf* *(p)* *ppp poss.*

♩ = c. 120

91

p *pp* *p*

pizz. arco

0 0 0 0 0 0 0

94

pizz. arco

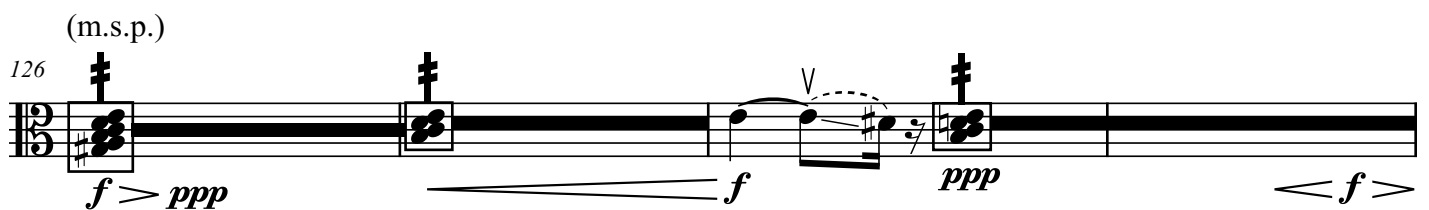
pp *p*

97

pizz.

ppp *ppp*





Indicates to improvise a sixteenth note figuration using the given notes for the duration of the line.

133

senza sord.
ord.

behind
the bridge

ord.

behind
the bridge

mf *sfz* *mf* *f* *sfz*

136

ord.

m.s.p.

f *pp* *fff*

139

ord.

m.s.p.

ord.

continue ad lib.

fff *poss.*

140

ord.

p *f* *fff* *poss.*

144

149

p *gliss.* *c. 90* *5* *con sord.* *8va* *p espress*

159

pp dolce

port.

port.

167

mp

pp

mp

pp

♩ = c. 76

173

ppp dolciss.

m.s.t.